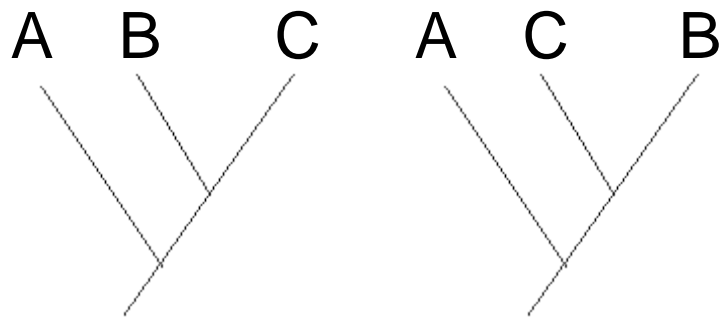


Learning Objective: Students will be able to interpret and construct a phylogenetic tree reflecting evolutionary relationships.

Formative Assessment



A, B, and C are three species of *Anolis* lizards. Which species is more closely related to species A?

- a. B
- b. C
- c. B or C are equally related to A

Summative Assessment

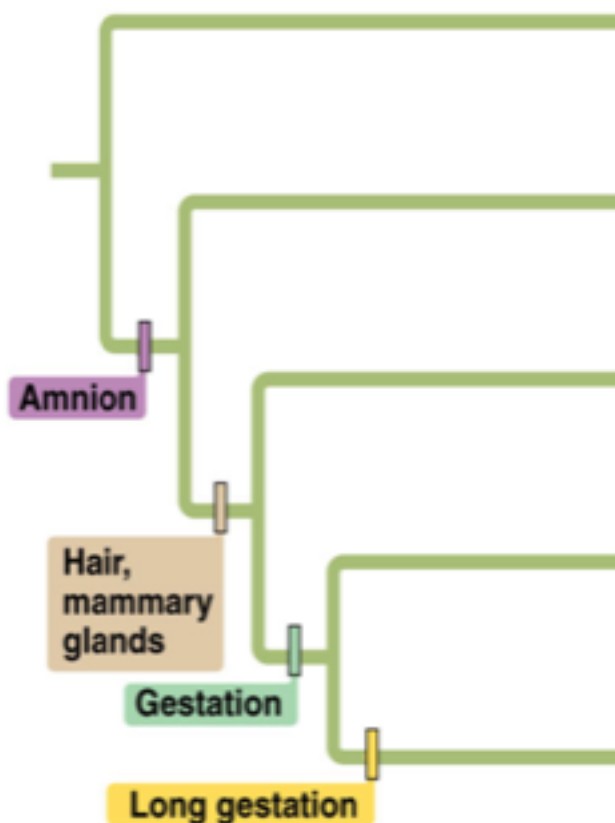
	Flowers	Vascular Tissue	Chlorophyll	Seeds
Flowering Plant	+	+	+	+
Moss	-	-	+	-
Fern	-	+	+	-
Gymnosperm	-	+	+	+

Given the data set above, construct the phylogenetic tree that most closely represents the evolutionary history.

Given the data label the branches with the correct organisms to most closely represent the evolutionary history.

	TAXA				
	Frog	Iguana	Duck-billed platypus	Kangaroo	Beaver
Amnion	0	1	1	1	1
Hair, mammary glands	0	0	1	1	1
Gestation	0	0	0	1	1
Long gestation	0	0	0	0	1

Character Table



Phylogenetic Tree